



MULTIMEDIA LABS

WIDA'S Storyboard

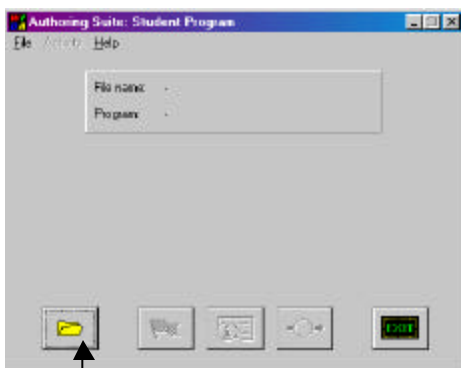


Storyboard, by WIDA, is an ESL program in which students must furnish the correct words to build and complete a text. The program has text hints, as well as multimedia features (e.g., sound and picture hints) designed to help students with the activity. The following help sheet guides the user through the basic steps in accessing and using *Storyboard*.

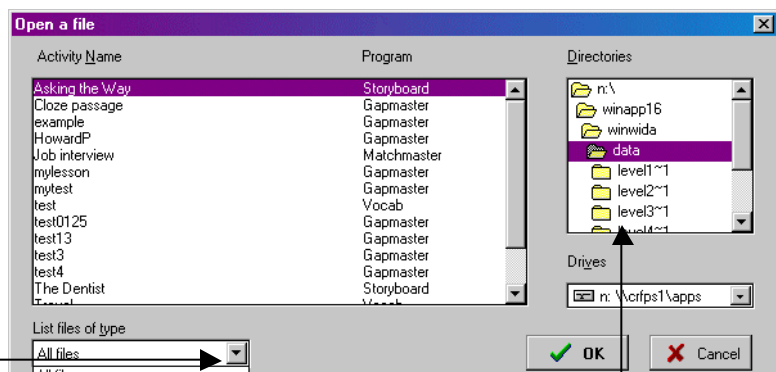
Please refer to the attached **SUGGESTED PRACTICES** sheet for suggestions on how to best use the program.

I. STARTING THE PROGRAM

1. Double-click **Student Applications** folder on the Windows desktop.
2. Double-click **ALC Applications** folder.
3. Double-click **ESL** folder.
4. Double-click **The Authoring Suite** folder.
5. Double-click the **WIDA Student Program** icon.



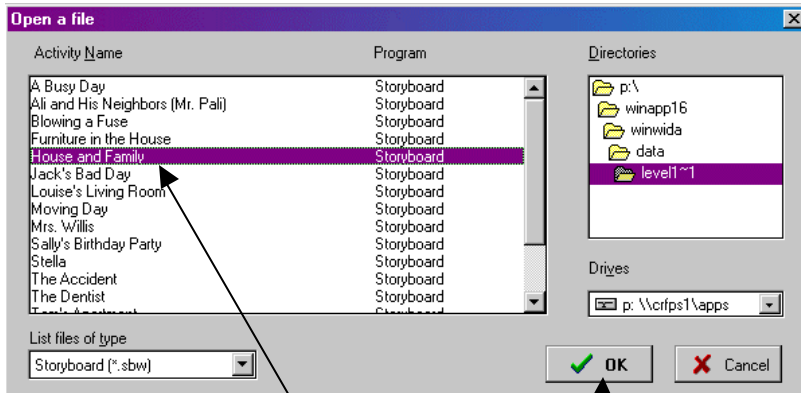
5. Click the open folder icon.



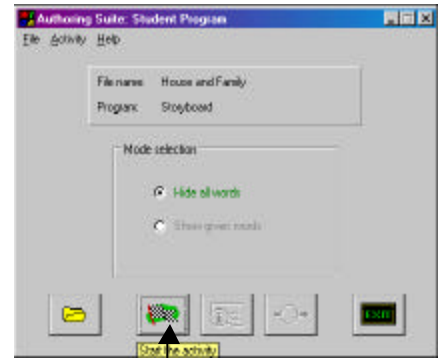
6. Under **List files of type**, click the down arrow.

7. Select **Storyboard** from the list.

8. In the **Directories** box, double-click the level you wish to work in.



9. Double click on an activity, or click once on the activity and click OK.



10. Click the *Start the Activity* icon.

II. GETTING AROUND THE PROGRAM

Click here to see a picture hint (not always available).

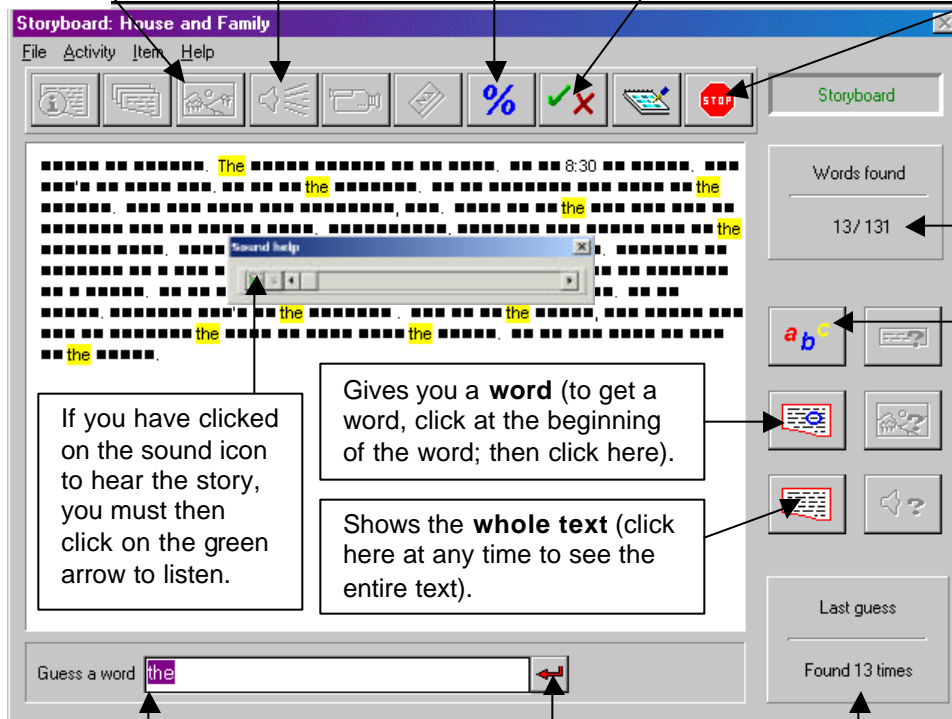
Click here to listen to the story (this is not always available).

Click here to see your score.

Click here to see your previous guesses.

Click here to stop the exercise.

2. If you have typed a word that belongs in the text, it will appear in the text as many times as it occurs (it will be highlighted in yellow).



If you have clicked on the sound icon to hear the story, you must then click on the green arrow to listen.

Gives you a **word** (to get a word, click at the beginning of the word; then click here).

Shows the **whole text** (click here at any time to see the entire text).

Indicates number of words found out of total number of words in text.

Gives you a **letter** of a word (to get a letter, click on a black square in text, and then click here).

Tells you how many times the last correct word guessed appears in the text.

1. In order to complete the text, type in a word in the **Guess a word** box. Then, click the arrow, or press Enter.